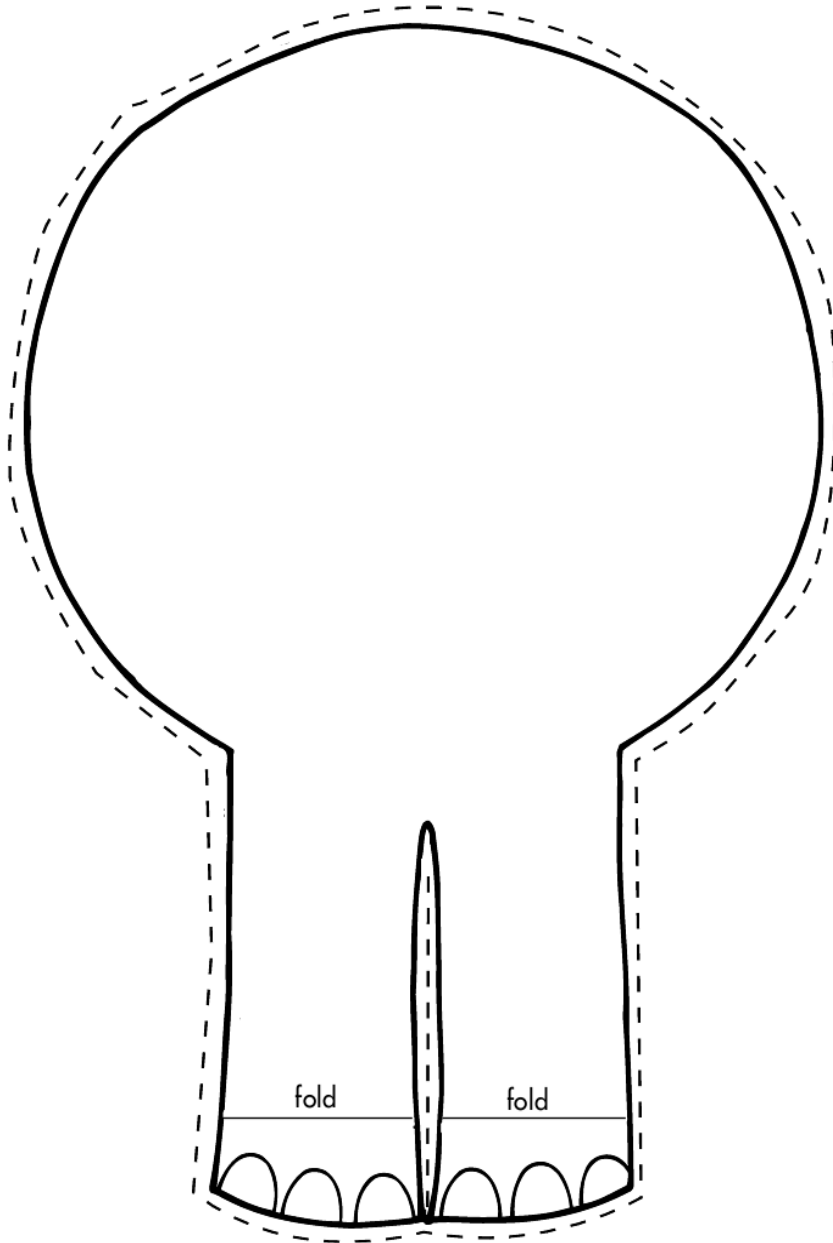
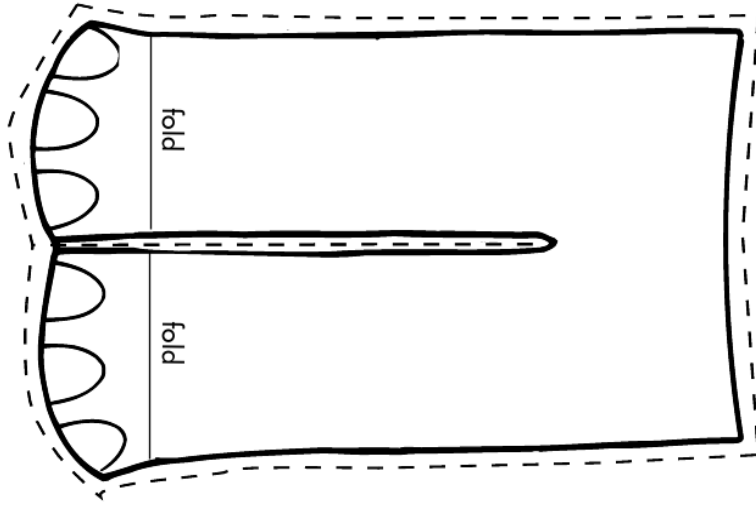


Color both sides of the trunk and curl it on a pencil.

1. Cover the tube with gray paper.
2. Color the elephant patterns.
3. Cut out the patterns and glue them on the tube.





Elephant

Gray,
saggy,
baggy
skin.

That's the cover an elephant's in.

Write about your animal.

Blank writing area with ten horizontal lines for describing the animal.

Paper Tube Zoo

Name: